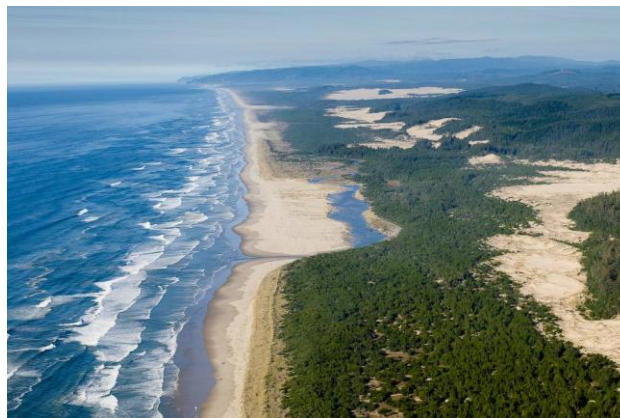


6. Siltcoos Proposal Area: *Siltcoos River Estuary to Tahkenitch Creek Estuary*

A popular fishing and hiking destination, this area near Florence is one of eight sites that comprise a proposed network of marine protected areas and marine reserves in Oregon state waters. By establishing a marine protected area and marine reserve, local communities can help preserve the area for future generations to enjoy, while still leaving the vast majority of our nearshore ocean waters open to sport and commercial fishing and crabbing.



A rich biological hotspot: this area features key coastal habitat.

- The ocean waters are connected to nearby rare coastal estuaries.
- Coastal coho salmon use these offshore waters and tributaries.
- The beaches serve as critical habitat for the threatened Western snowy plover.
- The area provides an important foraging site for migratory species.

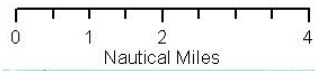
Proposed Protection: This site combines a **fully-protected marine reserve** and a more flexible **marine protected area**.

- The combined area stretches 6.1 nautical miles, starting just north of the Siltcoos Creek Estuary, ending south of the Tahkenitch Creek estuary.
- Within the marine protected area is a **marine reserve**, which stretches the same length of the coastline, 6.1 nautical miles, but only goes from shore out to one nautical mile.
- Recreational fishing from shore would be allowed in Our Ocean's proposal for this area.

The importance of a network

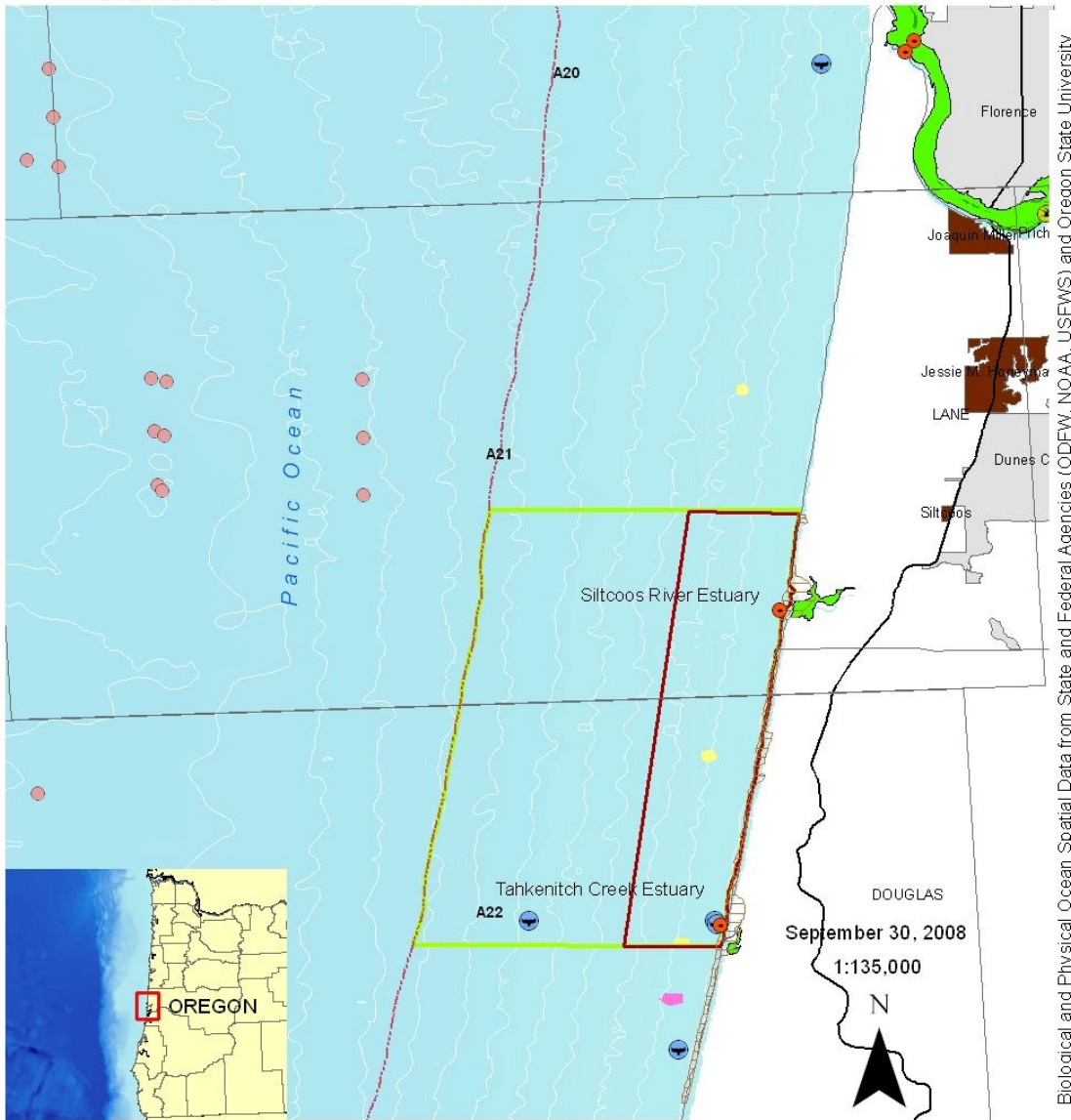
By providing a network of safe havens for marine life to feed and breed, marine reserves allow the ocean's natural productivity to restore the abundance of fish species and other marine life. Scientific research from existing marine reserves shows that a network of reserves and marine protected areas facilitates larval dispersal of aquatic species and makes them resilient. A network is necessary to protect a sample of all of Oregon's ocean habitats.

OPAC recommended that this area be eliminated from consideration as a marine reserve site.



Siltcoos Proposal Area

Map 6



Biological and Physical Ocean Spatial Data from State and Federal Agencies (ODFW, NOAA, USFWS) and Oregon State University

Legend

Gray Whale Observations	estuaries	seagrass	OR_terrsea_3nm_line
seabird colonies	Gravel	10m bathymetry	Proposed Marine Reserve
Corals_sponges	Rocky Reef	OregonStateParks	Proposed MPA
Pinnipeds	WSPlover_CritHab	Nomination Map Index	

One nautical mile = 1.1507 terrestrial miles.